

# Green life



2020

Casa de la Cultura de Montserrat. C/ Dos de Maig, 4, 46192, Montserrat. València.



Co-funded by the  
Europe for Citizens Programme  
of the European Union



Unión  
Europea

Network Open Town



## Ecological Transition in Domestic Waste Management



Eva Fornes, CRiV  
Montserrat, 2020

# Comunitat Valenciana: Introduction





# Spain: Distribution of Waste Competences

## NATIONAL LEVEL

**Ministry of Ecological Transition**  
**National Policy Maker**

- Transposition of EU waste legislation (Act 22/2011 on Waste)
- Development of own legislation on waste
- National Plan on waste, Reporting to EU

## REGIONAL LEVEL

**Regional Ministry of Agriculture, Environment, Climate Change and Rural Development**

**Regional Policy Maker (Act 10/2000)**

**Regional Plan on waste**

**Enforcement Body, Inspections and Sanctions proceedings**

**Reporting to National Ministry**

# Distribution of Domestic Waste Competences


## REGIONAL LEVEL

- Waste Management actions coordinator
- “Public service” declaration for municipal waste recovery and disposal
- Collaboration with municipalities

## MUNICIPAL LEVEL



### MUNICIPALITIES:

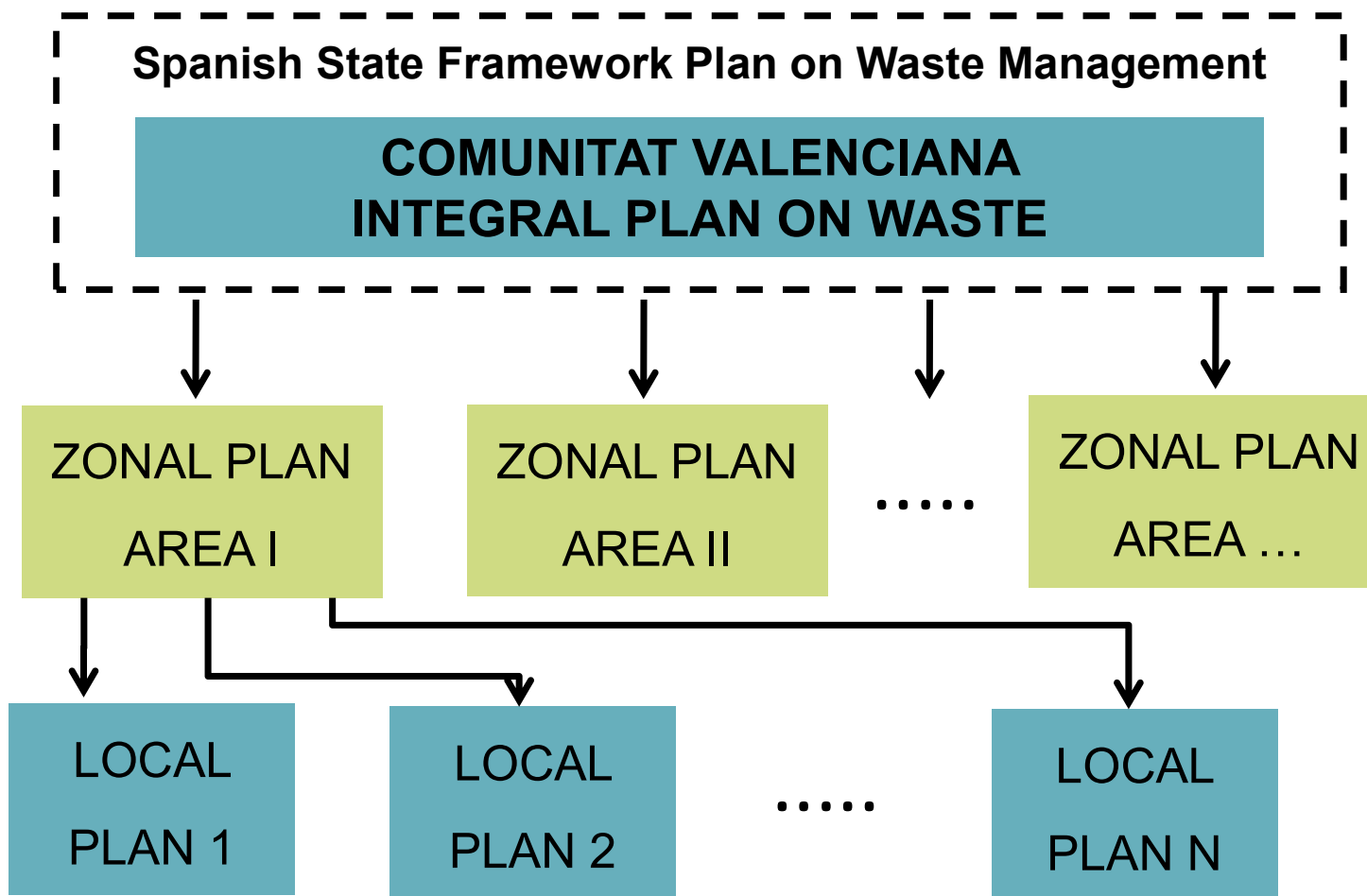
- 
- Collection of mixed waste
  - Collection of selective fractions
  - Transport
  - Recovery and disposal operations
  - Local Plan on Waste

### COUNTY COUNCILS:

- 3 Diputaciones  
framed within Autonomic structure
- Ensure responsibilities of municipalities are taken
  - WM services are preferential in works and service plans
  - Contribute in execution of supra-municipal plants



# Comunitat Valenciana: Waste Planning Instruments





# Comunitat Valenciana: Domestic Waste Zonal Plans

Elaborated by Regional Ministry/Municipalities.

Approved by Regional Government



- ✓ **Development of Regional Plan** for each area **ONLY for domestic waste**:
  - **Mixed waste**
  - **Any other stream generated by households**
- ✓ **Minimum of infrastructures** for domestic waste management:
  - **Drop-off centers**
  - **Transfer stations**
  - **Treatment plant: Materials recovery, Composting** (specific line for selective organic waste) and **Bulky waste center**
  - **Landfill for refusal fraction**
- ✓ **Compensations (economic and environmental)** for municipalities which host domestic waste treatment infrastructures



# Domestic Waste Zonal Plans: Responsibilities in implementation

## SUPRA - MUNICIPAL LEVEL: CONSORTIUMS

- ⇒ Integrate municipalities to manage together MW
- ⇒ Implement Zonal Plan according to Municipal Legislation
- ⇒ Competent Administration for proceeding and awarding contracts with operators (TO FINANCE INFRASTRUCTURES)
- ⇒ Own Technical and Economic Resources
- ⇒ Responsibility in recovery and disposal of MW (from municipalities involved)
- ⇒ Possibility of integrating Regional Ministry and County Councils

## CONSORCI RIBERA I VALLDIGNA, CRiV

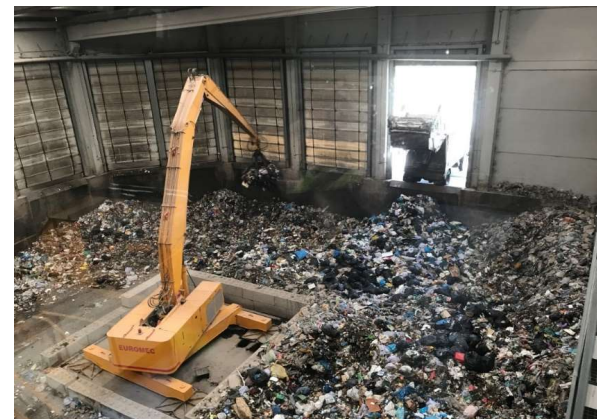
Competent Authority for the development of the Zonal Plan V4

CRiV integrates (aprox. 325.000 inh in 1.400 km<sup>2</sup>): **Regional Government (25%)**, **Valencia County Council (15%)**, **51 municipalities (60%)**: La Ribera Alta, La Ribera Baixa and La Vallidigna





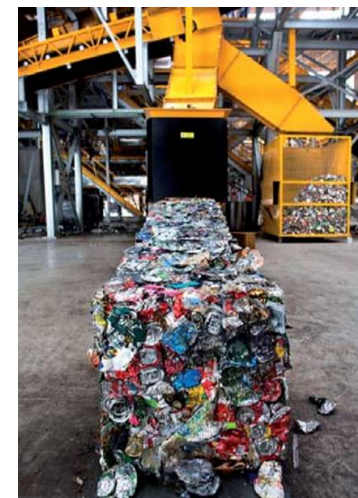
# CRiV Domestic Waste Recovery Complex (Reception)





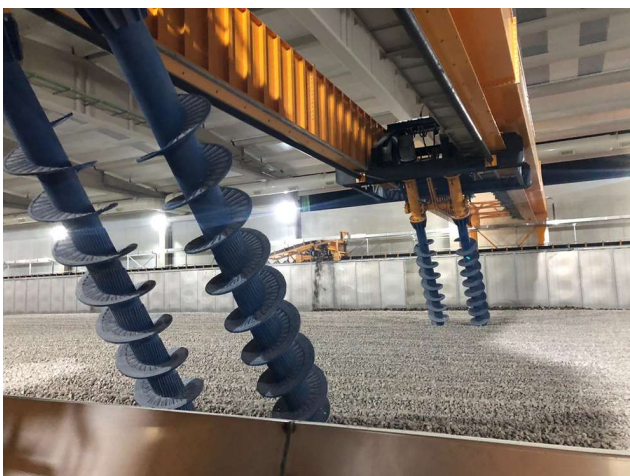
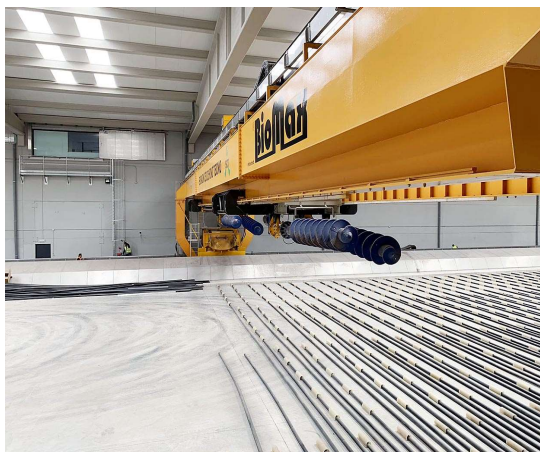


# CRiV Domestic Waste Recovery Complex (Pre-treatment)





## CRiV Domestic Waste Recovery Complex (Composting)

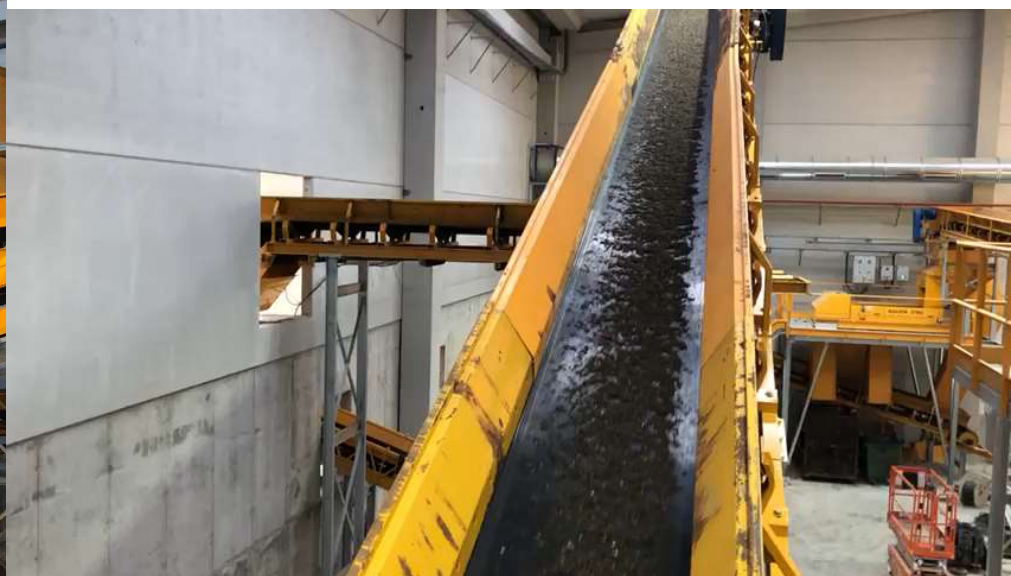


Organic fraction from MDW



# CRiV Domestic Waste Recovery Complex (Refining)

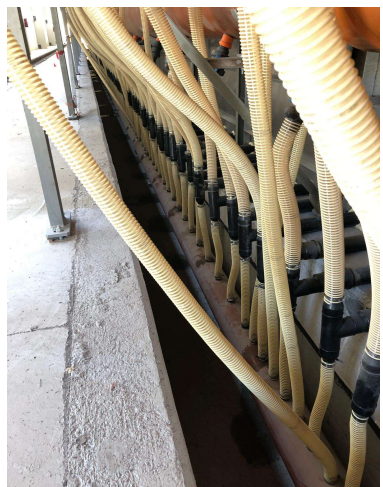
- INTERMEDIATE
- FINAL



**Organic amendment (high quality)**





# CRiV Domestic Waste Recovery Complex (Odour removal)

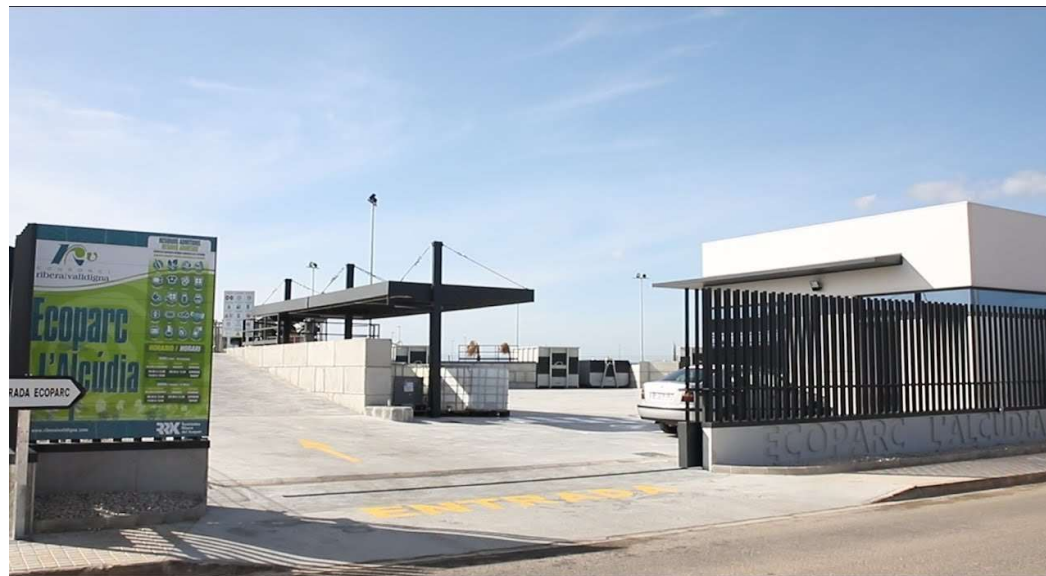




# CRiV Drop-off Centers Network

27 Fixed  
3 Mobiles

-  PUNTS DE PARADA ECOMÒBIL
-  UBICACIÓ D'ECOPARCS





# CRiV Drop-off Centers Network: Fixed Installations

## ⇒ Fixed installations

TYPE	POPULATION	LAYOUT	m <sup>2</sup>	BIG CONTAINERS	m <sup>3</sup>
A	1-1000	in 1 level	300-500	2 – 3	18 m <sup>3</sup>
B	1001-5000	in 2 levels	500-1.000	4 – 5	18 or 26 m <sup>3</sup>
C	5001-10000	in 2 levels	1.500-3.000	8 – 10	18 or 26 m <sup>3</sup>
D	> 10000	in 2 levels	2.500-5.000	12 – 20	18 or 26 m <sup>3</sup>

Consortium network:  
all citizens from any  
municipality of CRiV can use all  
drop-off centers

Always < 5 km from population



Roofed  
area

Containers

Control  
office



# Drop-off centers network collection: mobile installations

⇒ **Mobile drop-off centers**

**Consortium network:**  
all citizens from any municipality of  
CRIV can use all drop-off centers



**For those municipalities without a fixed installation**



# Drop-off centers network collection: IT System for Fee Bonus

## CONSORTIUM DROP-OFF CENTERS NETWORK: IT SYSTEM



- To promote selective collection in drop-off centers to avoid hazardous waste and other wastes from the mixed waste container (to ensure a quality treatment and composting process)
- To control access and obtaining reliable data (input and output)
- To establish a system of economic compensations of those citizens that use the network (a reduction in the consortium fee)





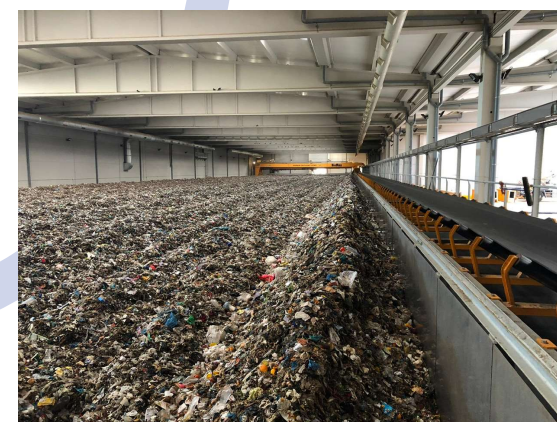
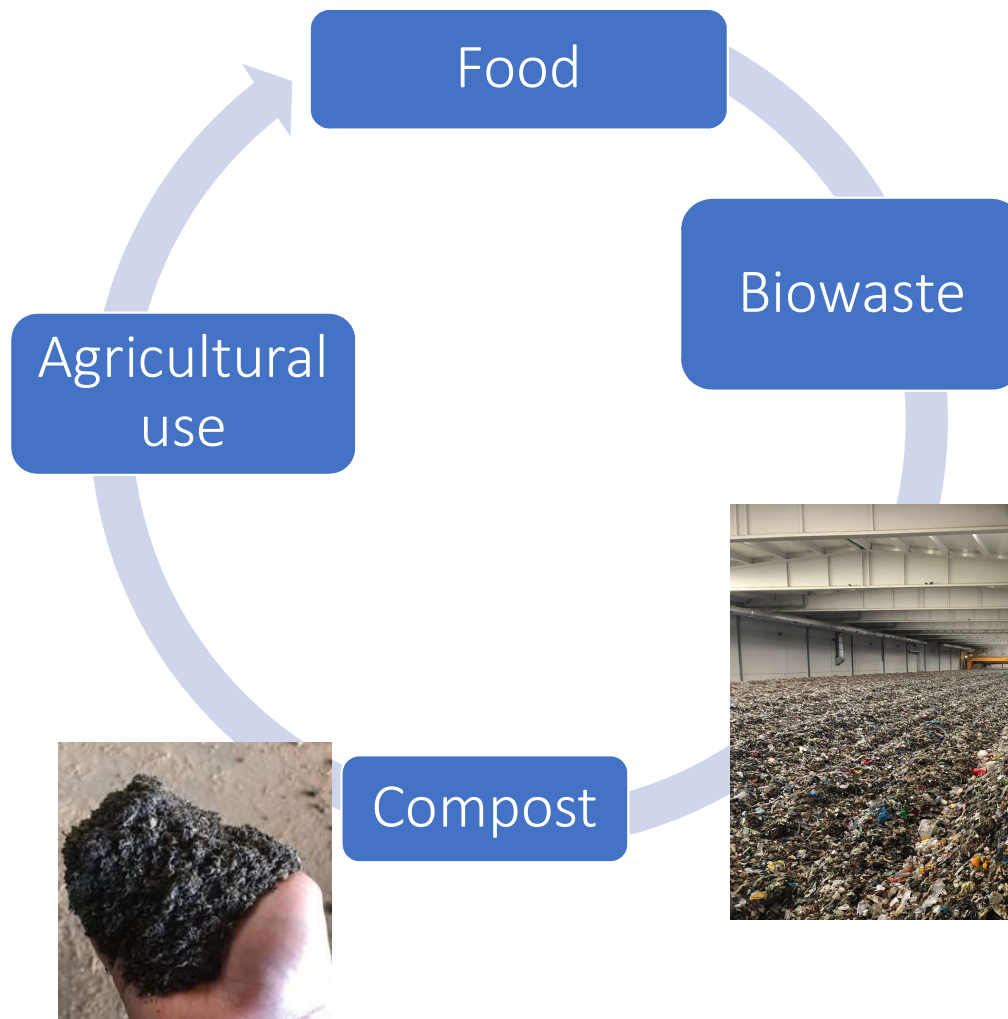


# Environmental Education Actions: Visits to installations





# Environmental Education Actions: Circular Economy





# THANKS! ANY QUESTION?

[eva.fornes@conriv.es](mailto:eva.fornes@conriv.es)

